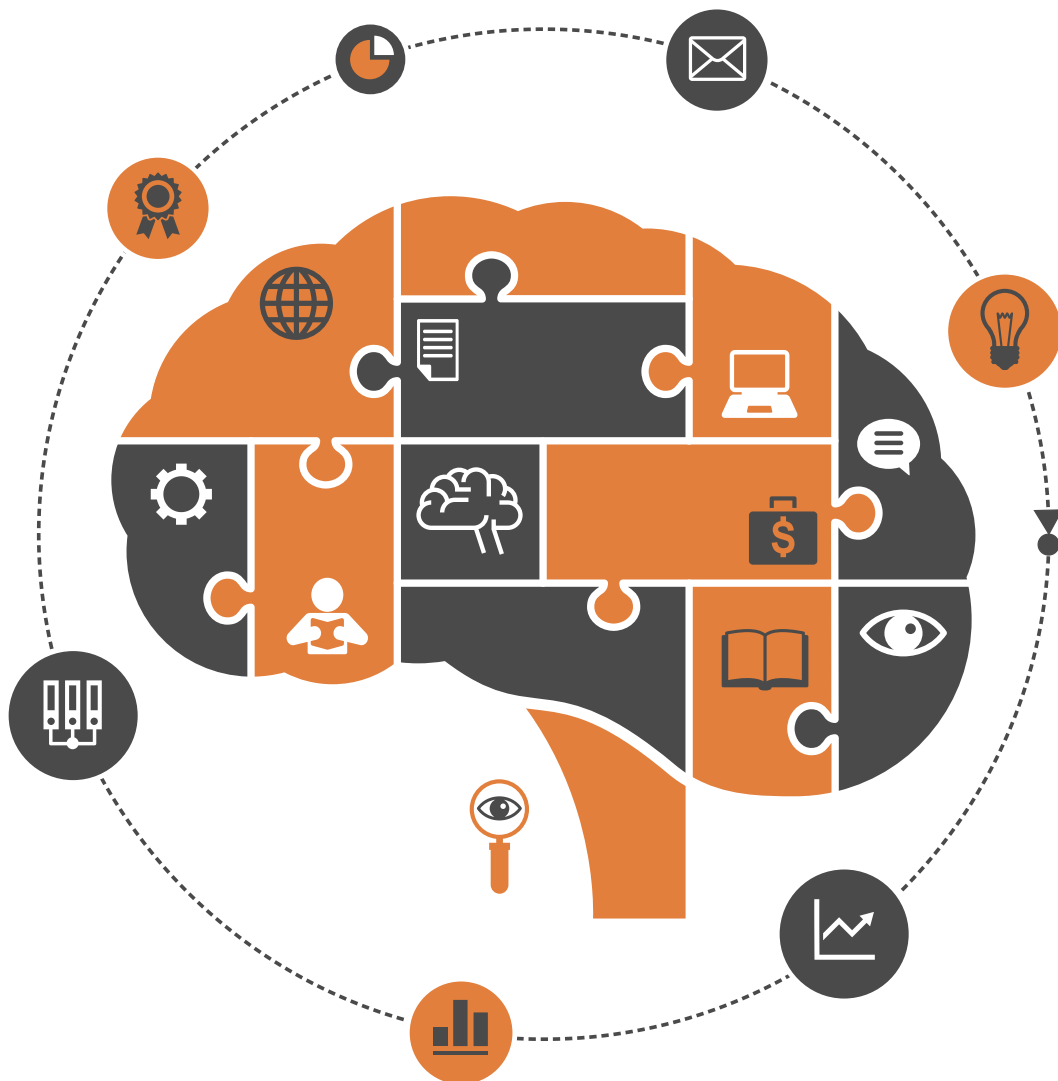


# Psychology



ISSN: 2152-7180



<https://www.scirp.org/journal/psych>

# Journal Editorial Board

ISSN Print: 2152-7180 ISSN Online: 2152-7199

<https://www.scirp.org/journal/psych>

---

## Editorial Board

<b>Dr. Ruggero Andrisano-Ruggieri</b>	University of Salerno, Italy
<b>Dr. Margarita Bakracheva</b>	Sofia University St. Kliment Ohridski, Bulgaria
<b>Dr. Yoram Bar-Tal</b>	Tel-Aviv University, Israel
<b>Prof. Adital Ben-Ari</b>	University of Haifa, Israel
<b>Prof. Sefa Bulut</b>	Ibn Haldun University, Turkey
<b>Dr. Mento Carmela</b>	University of Messina, Italy
<b>Prof. Giuliana Galli Carminati</b>	International Institute for Psychoanalysis Charles Baudouin, Switzerland
<b>Prof. M. Diane Clark</b>	Lamar University, USA
<b>Prof. Sonali De</b>	University of Calcutta, India
<b>Prof. María Leticia Bautista Díaz</b>	National Autonomous University of Mexico, Mexico
<b>Dr. Thomas Vincent Frederick</b>	California Baptist University, USA
<b>Dr. Michael Galanakis</b>	Hellenic Open University, Greece
<b>Dr. Florim Gallopeni</b>	Heimerer College, Albania
<b>Prof. George Kyriacou Georgiou</b>	University of Alberta, Canada
<b>Dr. Hong Jiao</b>	University of Maryland, USA
<b>Dr. Michelle Y. Kibby</b>	Southern Illinois University, USA
<b>Prof. Kenneth A. Kiewra</b>	University of Nebraska-Lincoln, USA
<b>Prof. Beth Kurtz-Costes</b>	University of North Carolina, USA
<b>Prof. Giovanni Laviola</b>	Italian National Institute of Health, Italy
<b>Prof. Yang Lee</b>	Gyeongsang National University, South Korea
<b>Dr. Katerina Maniadaki</b>	Technological Educational Institution, Greece
<b>Dr. James M. McKivigan</b>	Touro University Nevada, USA
<b>Prof. Tim F. McLaughlin</b>	Gonzaga University, USA
<b>Dr. Melodee Mograss</b>	McGill University, Canada
<b>Prof. Ora Nakash</b>	Smith College, Israel
<b>Dr. Raffaella Nori</b>	University of Bologna, Italy
<b>Dr. Jennifer Kim Plybon Penberthy</b>	University of Virginia School of Medicine, USA
<b>Dr. Andrea Peru</b>	University of Firenze, Italy
<b>Dr. Nora Rangel</b>	University of Guadalajara, Mexico
<b>Dr. So-Jung Seo</b>	Kyung Hee University, South Korea
<b>Prof. Hanaa A. M. Shuwaikh</b>	Fayoum University, Egypt
<b>Dr. Luísa Soares</b>	University of Madeira, Portugal
<b>Dr. Soyibjon Tajibaev</b>	Uzbek State University, Uzbekistan
<b>Prof. Tuomo Antero Takala</b>	University of Jyväskylä, Finland
<b>Dr. Kasım Tathlıhoğlu</b>	Bingöl University, Turkey
<b>Dr. Svetlana Usca</b>	Rezekne Academy of Technologies, Latvia
<b>Prof. Massimiliano Versace</b>	Boston University, USA
<b>Prof. Edda Weigand</b>	University of Münster, Germany
<b>Dr. Patricia Gail Williams</b>	University of Louisville, USA
<b>Dr. Hui-Ching Wu</b>	National Taiwan University, Chinese Taipei
<b>Prof. Wengang Yin</b>	Chinese Academy of Sciences, China
<b>Prof. Samah Khaled Zahran</b>	Women College, Ain Shams University, Egypt

# Table of Contents

**Volume 13    Number 12**

**November 2022**

**Understanding Somatoform Disorder through Insecure Attachment Developed by Childhood Trauma**

M. Uji.....1659

**The Effect of a Psychological Skill Training Package on the Mental Readiness of Taekwondo Athletes**

T. Julvanichpong, C. Pattanamontri, S. Charoenwattana, C. Singnoy.....1670

**Investigating the Effects of Stressful Stimuli on Learning and Working Memory**

W. Liu.....1685

**Neuroticism, Materialism, Pay and Job Satisfaction**

T. Ardabili, T. Chamorro-Premuzic, S. Grover, A. Furnham.....1697

**The ANX-8: A Brief Multi-Diagnostic Measure of Anxiety Disorders**

J. R. Rossiter.....1711

**Confidence and Calibration of Comprehension in Adolescence: Are They Domain-General or Domain-Specific?**

E. Kleider-Tesler, M. Barzillai, T. Katzir.....1727

**Gian Carlo Riccardi's Theatre: Some Psychological Considerations**

R. Tomassoni, F. Spilabotte, V. Coccarelli.....1748

**Influence of a Group Supervision Program in Sex Therapy on Therapists' Self-Efficacy and Attitudes toward Sexuality**

N. Shafir, D. Balahur.....1765

**COVID-19: Psychological Impact after Intensive Care Unit Hospitalisation**

S. El Aziz, A. Chadli, N. E. Haraj, A. Mounir, S. Laidi, S. Bensbaa, L. Barrou, C. El Hamidi El Kettani, K. M. Alami, M. Agoub, H. Ezzouine, B. Charra, A. Nsiri, R. Al Harrar, G. M. Bennouna, B. Ramdani, N. Kamal, M. B. Gharbi, M. H. Afif.....1796

**Metacognitive Knowledge, Regulation, and Study Habits**

A. MacKewn, T. Depriest, B. Donavant.....1811

# Psychology (PSYCH)

## Journal Information

### SUBSCRIPTIONS

The *Psychology* (Online at Scientific Research Publishing, <https://www.scirp.org/>) is published monthly by Scientific Research Publishing, Inc., USA.

#### Subscription rates:

Print: \$89 per issue.

To subscribe, please contact Journals Subscriptions Department, E-mail: [sub@scirp.org](mailto:sub@scirp.org)

### SERVICES

#### Advertisements

Advertisement Sales Department, E-mail: [service@scirp.org](mailto:service@scirp.org)

#### Reprints (minimum quantity 100 copies)

Reprints Co-ordinator, Scientific Research Publishing, Inc., USA.

E-mail: [sub@scirp.org](mailto:sub@scirp.org)

### COPYRIGHT

#### Copyright and reuse rights for the front matter of the journal:

Copyright © 2022 by Scientific Research Publishing Inc.

This work is licensed under the Creative Commons Attribution International License (CC BY).

<http://creativecommons.org/licenses/by/4.0/>

#### Copyright for individual papers of the journal:

Copyright © 2022 by author(s) and Scientific Research Publishing Inc.

#### Reuse rights for individual papers:

Note: At SCIRP authors can choose between CC BY and CC BY-NC. Please consult each paper for its reuse rights.

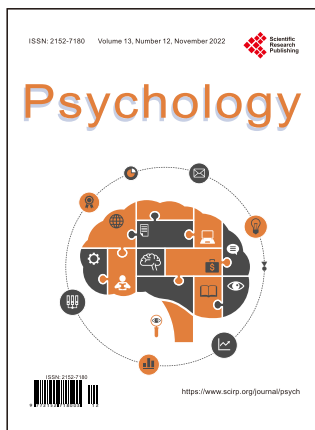
#### Disclaimer of liability

Statements and opinions expressed in the articles and communications are those of the individual contributors and not the statements and opinion of Scientific Research Publishing, Inc. We assume no responsibility or liability for any damage or injury to persons or property arising out of the use of any materials, instructions, methods or ideas contained herein. We expressly disclaim any implied warranties of merchantability or fitness for a particular purpose. If expert assistance is required, the services of a competent professional person should be sought.

### PRODUCTION INFORMATION

For manuscripts that have been accepted for publication, please contact:

E-mail: [psych@scirp.org](mailto:psych@scirp.org)



Call for Papers

# Psychology (PSYCH)

ISSN Print: 2152-7180 ISSN Online: 2152-7199

<https://www.scirp.org/journal/psych>

---

PSYCH is an international refereed journal dedicated to the latest advancements in Psychology. The goal of this journal is to keep a record of the state-of-the-art research and promote the research work in these fast moving areas.

---

## Subject Coverage

This journal invites original research and review papers that address the following issues in Psychology. Topics of interest include, but are not limited to:

Anomalistic Psychology	Military Psychology
Behavioral Psychology	National Psychology
Biological Basis of Behavior	Neuropsychology
Clinical Psychology	Political Psychology
Cognitive Psychology	Professional Practice
Counseling Psychology	Psychological Assessment and Evaluation
Cultural Psychology	Psychology of Art
Economic Psychology	Psychology of Religion
Educational Psychology	Psychotherapy
Engineering Psychology	Safety Psychology
Environmental Psychology	School Psychology
Ethics in Psychology	Scientific Psychology
Family Psychology and Couples Psychology	Social Psychology
Forensic Psychology	Sport Psychology
Gerontology	Traffic Psychology
Health Psychology	Work, Industrial and Organizational Psychology
Intelligence Psychology	Others
Managerial and Leadership Psychology	

We are also interested in short papers (letters) that clearly address a specific problem, and short survey or position papers that sketch the results or problems on a specific topic. Authors of selected short papers would be invited to write a regular paper on the same topic for future issues of the **PSYCH**.

## Notes for Intending Authors

---

Submitted papers should not have been previously published nor be currently under consideration for publication elsewhere. Paper submission will be handled electronically through the website. All papers are refereed through a peer review process. For more details about the submissions, please access the website.

---

## Website and E-Mail

<https://www.scirp.org/journal/psych>

E-mail: [psych@scirp.org](mailto:psych@scirp.org)

## ***What is SCIRP?***

Scientific Research Publishing (SCIRP) is one of the largest Open Access journal publishers. It is currently publishing more than 200 open access, online, peer-reviewed journals covering a wide range of academic disciplines. SCIRP serves the worldwide academic communities and contributes to the progress and application of science with its publication.

## ***What is Open Access?***

All original research papers published by SCIRP are made freely and permanently accessible online immediately upon publication. To be able to provide open access journals, SCIRP defrays operation costs from authors and subscription charges only for its printed version. Open access publishing allows an immediate, worldwide, barrier-free, open access to the full text of research papers, which is in the best interests of the scientific community.

- High visibility for maximum global exposure with open access publishing model
- Rigorous peer review of research papers
- Prompt faster publication with less cost
- Guaranteed targeted, multidisciplinary audience



**Scientific  
Research  
Publishing**

**Website: <https://www.scirp.org>**

**Subscription: [sub@scirp.org](mailto:sub@scirp.org)**

**Advertisement: [service@scirp.org](mailto:service@scirp.org)**