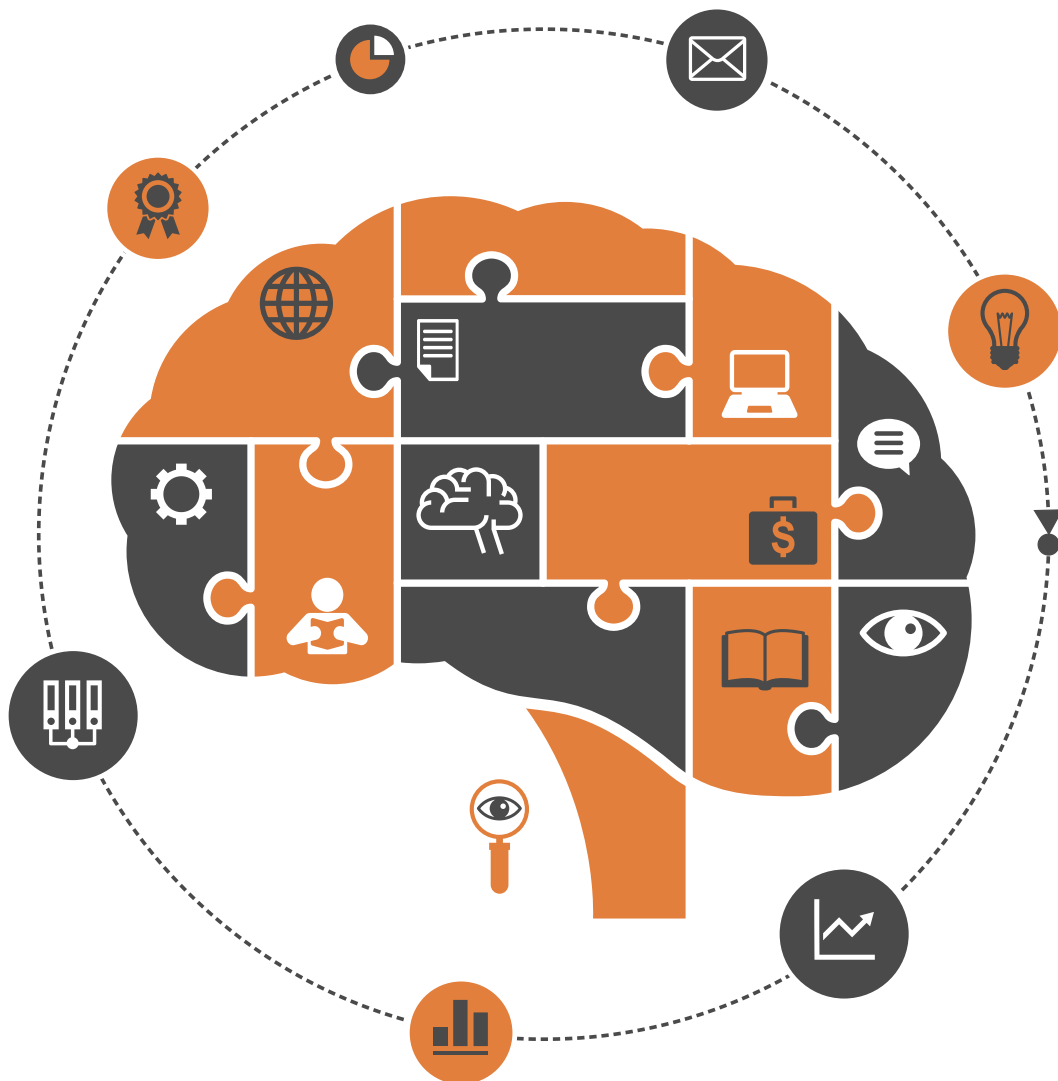


ISSN: 2152-7180

Volume 9, Number 7, July 2018



Psychology



ISSN: 2152-7180



www.scirp.org/journal/psych

Journal Editorial Board

ISSN Print: 2152-7180 ISSN Online: 2152-7199

<http://www.scirp.org/journal/psych>

Editorial Board

Dr. Ruggero Andrisano-Ruggieri	University of Salerno, Italy
Dr. Yoram Bar-Tal	Tel-Aviv University, Israel
Prof. Adital Ben-Ari	University of Haifa, Israel
Dr. Sefa Bulut	Ibn Haldun University, Turkey
Prof. Matthew C. Costello	Indiana University South Bend, USA
Dr. Jay R. Elliott	Yale University, USA
Dr. Thomas Vincent Frederick	California Baptist University, USA
Prof. Jay Friedenberg	Manhattan College, USA
Prof. George Kyriacou Georgiou	University of Alberta, Canada
Dr. David M. Goodman	Harvard Medical School, USA
Dr. Hong Jiao	University of Maryland, USA
Dr. Michelle Y. Kibby	Southern Illinois University, USA
Prof. Kenneth A. Kiewra	University of Nebraska-Lincoln, USA
Prof. Beth Kurtz-Costes	University of North Carolina, USA
Dr. Giovanni Laviola	Italian National Institute of Health, Italy
Prof. Yang Lee	Gyeongsang National University, South Korea
Dr. Katerina Maniadaki	Technological Educational Institution, Greece
Prof. Tim F. McLaughlin	Gonzaga University, USA
Dr. John T. Mitchell	Duke University, USA
Dr. Melodee Mograss	McGill University, Canada
Dr. Ora Nakash	Interdisciplinary Center (IDC) Herzliya, Israel
Dr. Raffaella Nori	University of Bologna, Italy
Dr. Jennifer Kim Plybon Penberthy	University of Virginia School of Medicine, USA
Dr. So-Jung Seo	Kyung Hee University, South Korea
Prof. Tuomo Antero Takala	University of Jyväskylä, Finland
Prof. Massimiliano Versace	Boston University, USA
Prof. Edda Weigand	University of Münster, Germany
Dr. Berney J. Wilkinson	Webster International University, USA
Dr. Patricia Gail Williams	University of Louisville, USA
Dr. Hui-Ching Wu	National Taiwan University, Chinese Taipei
Prof. Wengang Yin	Chinese Academy of Sciences, China

Table of Contents

Volume 9 Number 7

July 2018

Functional Magnetic Resonance Imaging Demonstrates That Hypnosis Is Conscious and Voluntary

E. Casiglia, F. Finatti, F. Gasparotti, M. R. Stabile, M. Mitolo, F. Albertini, A. M. Lapenta, E. Facco, V. Tikhonoff, A. Venneri.....1571

Social and Spiritual Dimensions as Protective Factors in the Relationship between Acculturative Stress and Subjective Well-Being among International Students in Taiwan

I. R. Edara.....1582

Self-Concept in Kindergarten and First Grade Children: A Longitudinal Study on Structure, Development, and Relation to Achievement

L. C. Dapp, C. M. Roebers.....1605

Empirical Evidence for a New Class of Personality Disorder: The Safety-Oriented Personality Style or Phobicentric Psychopathology (SOPS/PCP) and Impact on Personality Psychology

P. Bickersteth, X. X. Zhang, Q. Guo.....1630

The Big Five Factors of Personality and Its Relation to Emotional Intelligence among Leaders of Educational Institutions in the State of Kuwait

A. M. Al-Nasser, M. Al-Enezy.....1680

The Psychology of the Overview Effect and Global Economic Ethics

R. C. Johnson.....1695

The Influence of Social Rejection on Cognitive Control

T. Wang, H. M. Sha.....1707

Subjective Well-Being in Nostalgia: Effect and Mechanism

M. Rao, X. T. Wang, H. L. Sun, K. Gai.....1720

Hellenic Integrative Psychotherapy: A Total Holistic Approach

J. N. Nestoros.....1731

Positive Parenting or Positive Psychology Parenting? Towards a Conceptual Framework of Positive Psychology Parenting

T. A. Kyriazos, A. Stalikas.....1761

Validation of the Flourishing Scale (FS), Greek Version and Evaluation of Two Well-Being Models

T. A. Kyriazos, A. Stalikas, K. Prassa, V. Yotsidi, M. Galanakis, C. Pezirkianidis.....1789

Testosterone and Its Influence on Emotion Recognition in Young, Healthy Males

S. Rukavina, F. Sachsenweger, L. Jerg-Bretzke, A. E. Daucher, H. C. Traue, S. Walter, H. Hoffmann.....1814

Psychometric Evidence of the Brief Resilience Scale (BRS) and Modeling Distinctiveness of Resilience from Depression and Stress

T. A. Kyriazos, A. Stalikas, K. Prassa, M. Galanakis, V. Yotsidi, A. Lakioti.....1828

Heart Rate Synchrony in Psychological Counseling: A Case Study

K. Kodama, S. Tanaka, D. Shimizu, K. Hori, H. Matsui.....1858

Is the “Almost Perfect Scale” Almost Perfect? The Psychometric Properties of the Arabic Version of APS-R and Its Short Form

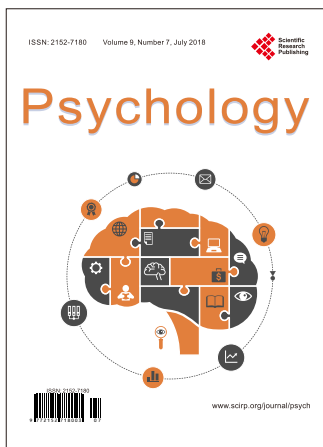
I. Kira, H. Shuwiekh, K. Rice, J. Ashby.....1875

The Effects of Environmental Awareness and Consumption Value on Green Makeup Product Purchase Intentions

G. G. H. Ma, P.-L. P. Rau, Z. Guo.....1898

A Consideration of Emotional Topology: Representing Psychological Transitions on a Two-Dimensional Map

K. Aoki, H. Hirahara, C. Kato, K. Tsuchida.....1917



Call for Papers

Psychology (PSYCH)

ISSN Print: 2152-7180 ISSN Online: 2152-7199

<http://www.scirp.org/journal/psych>

PSYCH is an international refereed journal dedicated to the latest advancement of Psychology. The goal of this journal is to keep a record of the state-of-the-art research and promote the research work in these fast moving areas.

Subject Coverage

This journal invites original research and review papers that address the following issues in Psychology. Topics of interest include, but are not limited to:

Behavioral Psychology	Military Psychology
Biological Basis of Behavior	National Psychology
Clinical Psychology	Neuropsychology
Cognitive Psychology	Political Psychology
Counseling Psychology	Professional Practice
Cultural Psychology	Psychological Assessment and Evaluation
Economic Psychology	Psychology of Art
Educational Psychology	Psychology of Religion
Engineering Psychology	Psychotherapy
Environmental Psychology	Safety Psychology
Ethics in Psychology	School Psychology
Family Psychology and Couples Psychology	Scientific Psychology
Forensic Psychology	Social Psychology
Gerontology	Sport Psychology
Health Psychology	Traffic Psychology
Intelligence Psychology	Work, Industrial and Organizational Psychology
Managerial and Leadership Psychology	Others

We are also interested in short papers (letters) that clearly address a specific problem, and short survey or position papers that sketch the results or problems on a specific topic. Authors of selected short papers would be invited to write a regular paper on the same topic for future issues of the **PSYCH**.

Notes for Intending Authors

Submitted papers should not have been previously published nor be currently under consideration for publication elsewhere. Paper submission will be handled electronically through the website. All papers are refereed through a peer review process. For more details about the submissions, please access the website.

Website and E-Mail

<http://www.scirp.org/journal/psych>

E-mail: psych@scirp.org

What is SCIRP?

Scientific Research Publishing (SCIRP) is one of the largest Open Access journal publishers. It is currently publishing more than 200 open access, online, peer-reviewed journals covering a wide range of academic disciplines. SCIRP serves the worldwide academic communities and contributes to the progress and application of science with its publication.

What is Open Access?

All original research papers published by SCIRP are made freely and permanently accessible online immediately upon publication. To be able to provide open access journals, SCIRP defrays operation costs from authors and subscription charges only for its printed version. Open access publishing allows an immediate, worldwide, barrier-free, open access to the full text of research papers, which is in the best interests of the scientific community.

- High visibility for maximum global exposure with open access publishing model
- Rigorous peer review of research papers
- Prompt faster publication with less cost
- Guaranteed targeted, multidisciplinary audience



**Scientific
Research
Publishing**

Website: <http://www.scirp.org>

Subscription: sub@scirp.org

Advertisement: service@scirp.org