

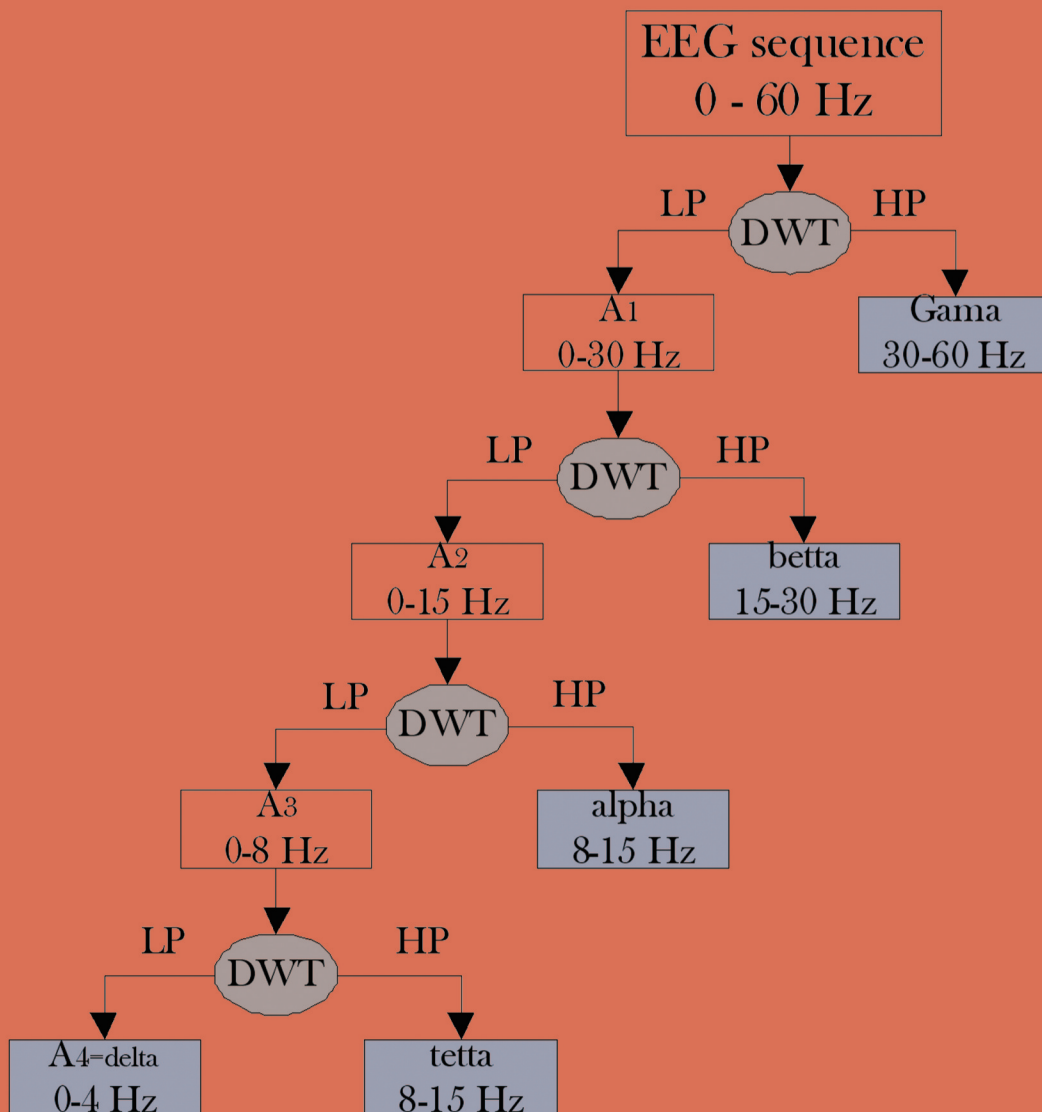


JBiSE

ISSN: 1937-6871

Volume 3 Number 12 December 2010

Journal of Biomedical Science and Engineering



ISSN: 1937-6871



Editor-in-Chief
Kuo-Chen Chou

TABLE OF CONTENTS

Volume 3, Number 12, December 2010

Fabrication and characterization of cross-linked gelatin electro-spun nano-fibers	
T.-H. Nguyen, B.-T. Lee.....	1117
Development of a novel protein multi-blotting device	
A. M. Hagyousif, V. J. Chong, H. Yokota, S. Y. P. Chien.....	1125
Modeling perisaccadic time perception	
A. Guazzini, P. Liò, A. Passarella, M. Conti.....	1133
Detection of bleeding patterns in WCE video using TV-Retinex	
M. Li.....	1143
Silk fibroins modify the atmospheric low temperature plasma-treated poly (3-hydroxybutyrate-co-3-hydroxyhexanoate) film for the application of cardiovascular tissue engineering	
H. X. Yang, M. Sun, P. Zhou, L. F. Pan, C. G. Wu.....	1146
Magnetic field strength properties in bone marrow during pulsed electromagnetic stimulation	
H. Tamaki, K. Yotani, A. Yuki, H. Kirimoto, K. Sugawara, H. Onishi.....	1156
Production of porous Ni-Ti alloy and test of its biocompatibility under in-vivo conditions	
A. K. Gur, N. Orhan, E. Unsaldi, A. S. Durmuş, N. Çolakoğlu.....	1161
Different architectures of collagen fibrils enforce different fibrillogenesis mechanisms	
M. Raspanti.....	1169
Chaotic features analysis of EEG signals during hallucination tasks of waterloo-stanford standard	
E. Yargholi, A. M. Nasrabadi.....	1175
A wavelet-approximate entropy method for epileptic activity detection from EEG and its sub-bands	
H. Vavadi, A. Ayatollahi, A. Mirzaei.....	1182

The figure on the front cover is from the article published in J. Biomedical Science and Engineering, 2010, Vol.3, No. 12, pp.1182-1189 by H. Vavadi, A. Ayatollahi and A. Mirzaei.